

# Product Catalog

## Oswal Pumps Ltd.



ISO 9001:2015 CERTIFICATION

Products

MORE STAND  
MORE SAVING  
ENERGY SAVING GUIDE



PUMPS & MOTORS  
Domestic | Agriculture | Industrial

Monoblock Pumps  
CI Submersible  
Openwell Pumps  
Cables  
Electric Motors  
Openwell Pumps  
Submersible  
Winding Wire  
Openwell Pumps  
SS Submersible  
Mud Pumps  
Pressure Pumps  
Solar Pumps  
Electric Motors  
Booster Pumps  
SS Submersible  
Cables  
Monoblock Pumps  
Submersible  
Winding Wire  
Openwell Pumps  
CI Submersible  
SS Submersible  
Electric Motors  
Pressure Pumps  
SS Submersible  
Shallow Well Pumps



[www.oswalpumps.com](http://www.oswalpumps.com)

# Company Profile

Oswal Pumps Limited started in year 2000 has become now India's first unique integrated plant with world class manufacturing facility in its own kind, backed by seasoned engineers and technicians, which has resulted in as the fastest growing company in the field of Submersible Pumps, Monoblock Pumps, Pressure Pumps, Electric Motors, Electric Panel, Submersible Winding Wires, Cables and uPVC Pipes & Fittings covering Domestic, Agriculture and Industrial Range.

Own plant covering an area of 45000 sq. meters, is well equipped with modern machineries. An ISO 9001 certified company, products are ISI marked, certified for BEE 5 Star marking. The company is one of the leading manufacturer of energy efficient Stainless Steel Pumps in India.

## Prestigious Award from :

**National Udyog Rattan Award**

**Bhartiya Udyog Rattan Award**

Quality and Service, Value for customer's money - are the guiding principles at OSWAL

## Quality Checks





# Infrastructure



Electrical Stamping Unit



Winding Wire Plant



Cable Manufacturing Unit



CI Casting Plant



Investment Casting Plant



Aluminium Die Casting Plant



Packaging Unit



Enamel Wire Plant



Automatic Winding Unit



SS Pipe Plant



Injection Plastic Moulding Plant



Thrust Bearing Plant



## ► Centrifugal Regenerative Pumps - confirming to IS 8472 : 1998

### Specifications :

Power Range	0.5, 1.0 & 1.1 HP
Version	220-240V, 50 Hz, A.C.-1 Phase, Permanent Split Capacitor (PSC) Incorporated with Thermal Overload Protector
Speed	2880 rpm.
Duty	S1 (Continuous)
Degree of Protection	IP 54
Insulation	Class B
Discharge range	60 - 3480 lph
Head range	4 - 48 mtr
Suction lift up to	8 mtr
Suction x Delivery size	25x25 mm

### MOC :

Pump Casing	Cast Iron
Motor Body	Aluminum / Cast Iron
Impeller	Bronze
Shaft	EN 8
Sealing	Mechanical Seal (Carbon V/s Ceramic)

### Application in :

- Water supply in houses, institutes & hospitals
- Hydro circulation systems
- Water for gardening & nurseries
- Water supply in multi-storey buildings
- Usage in ultra-filtration system



## ► Shallow Well Pumps - Confirming to IS 8472 : 1998

### Specifications :

Power Range	0.5, 1.0 & 1.1 HP
Version	220-240V, 50 Hz, A.C.-1 Phase, Permanent Split capacitor (PSC) Incorporated with Thermal Overload Protector.
Speed	2880 rpm.
Duty	S1 (Continuous)
Degree of Protection	IP 54
Insulation	Class B
Discharge range	3480-360 lph
Head range	4-36 mtr
Suction lift up to	8 mtr
Suction x Delivery size	25x25 mm

### MOC :

Pump Casing	Cast Iron / MS
Motor Frame	Aluminum / Cast Iron
Impeller	Cast Iron / Noryl
Diffuser	Cast Iron / Noryl
Shaft	EN-8
Sealing	Mechanical Seal (Carbon V/s Ceramic)

### Application in :

- Supply System of small gardens
- Domestic pressure boosting
- Drinking water supply in small industries
- Water supply in small farms
- Water supply in nurseries



## ► Magic Suction Pumps

### Specifications :

Power Range	0.5, 1.0 & 1.1 HP
Version	220-240V, 50 Hz, A.C.-1 Phase, Permanent Split capacitor (PSC) Incorporated with Thermal Overload Protector.
Speed	2880 rpm.
Duty	S1 (Continuous)
Degree of Protection	IP 54
Insulation	Class B
Discharge range	120 - 2340 lph
Head range	4 - 36 mtr
Suction lift up to	8 mtr
Suction x Delivery size	15x15 & 25x25 mm

### MOC :

Pump Casing	Cast Iron / Stainless Steel
Motor Body	Aluminum / Cast Iron
Impeller	Bronze
Diffuser	Stainless Steel / Bronze
Shaft	EN-8
Sealing	Mechanical Seal (Carbon V/s Ceramic)

### Application in :

- Domestic establishments
- Small Irrigation & landscapes
- Small Farms & resorts
- Gardens & nurseries
- Industry & civil applications



## ► Booster Pumps 1440 rpm

### Specifications :

Power Range	0.5 & 1.0 HP
Version	220-240V, 50 Hz, A.C.-1 Phase, Capacitor Start & Capacitor Run (CSCR)
Speed	1440 rpm
Duty	S1 (Continuous)
Degree of Protection	IP 54
Insulation	Class B
Discharge range	7 - 60 lpm
Head range	6 - 36 mtr
Suction lift up to	8 mtr.
Suction x Delivery size	25x25 mm

### MOC :

Pump Casing	Cast Iron
Motor Body	Cast Iron
Impeller	Bronze
Shaft	EN 8
Sealing	Mechanical Seal (Carbon V/s Ceramic)

### Application in :

- Domestic multi storey
- Water supply in resorts, small landscapes
- Washing purpose
- Civil applications in hospitals
- Water supply in institutes





## ► Centrifugal Monoblock Pumps 2880 rpm - confirming to IS 9079 : 2002

### Specifications :

Power Range	0.5 - 3 HP in 1 Phase 0.5 – 20 HP in 3 Phase
Speed	2880 rpm
Discharge range	65 - 1350 lpm in 1 Phase 65 – 2290 lpm in 3 Phase
Head range	5 - 34 mtr in 1 Phase 5 - 84 mtr in 3 Phase
Suction lift up to	8 mtr.
Suction x Delivery size	25x25 to 100x100 mm
Version	220-240V, 50 Hz, A.C.-1 Phase, Permanent Split capacitor (PSC) Incorporated with Thermal Overload Protector, 350-440V – 3 Phase
Degree of Protection	IP 54
Insulation	Class B
Duty	S1 (Continuous)

### MOC :

Pump Casing	Cast Iron
Motor Body	Cast Iron
Impeller	Cast Iron
Shaft	EN 8
Sealing	Mechanical Seal (Carbon & Ceramic) or Asbestos Gland Rope Packing

### Application in :

- Sprinklers, drip irrigation & flooding
- In farms & gardens
- Industrial, fountains & pools
- High-rise buildings for water circulation
- Fire fighting set up



## ► Centrifugal Monoblock Pumps 1440 rpm - Confirming to IS 9079 : 2002

### Specifications :

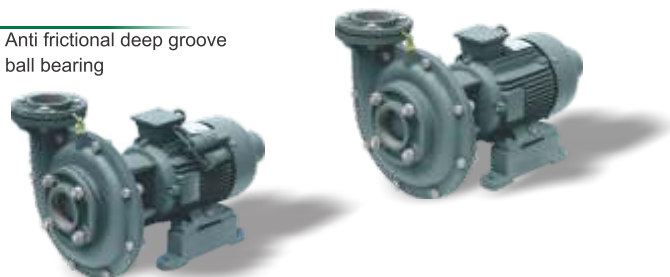
Power Range	2.0 – 5.0 HP in 1 Phase 2.0 – 15 HP in 3 Phase
Speed	1440 rpm
Discharge range	305 – 1055 lpm in 1 Phase 305 – 4260 lpm in 3 phase
Head range	6 - 14 mtr in 1 Phase 6 - 32 mtr in 3 Phase
Suction lift up to	8 mtr.
Suction x Delivery size	50x50 to 100x100 mm
Version	220-240V-1 phase 350-440V-3 phase A.C., 50 Hz,
Degree of Protection	IP 54
Insulation	Class A / B
Duty	S1 (Continuous)
Thermal Protector	Optional
Method of Starting	DOL / Star-Delta

### MOC :

Pump Casing	Cast Iron
Motor Body	Cast Iron
Impeller	Cast Iron
Shaft	EN 8
Sealing	Asbestos Gland Rope Packing
Bracket / front end shield	Cast Iron
Bearing	Anti frictional deep groove ball bearing

### Application in :

- Irrigation
- Industrial water system
- Agriculture water supply
- Cooling systems
- Rural water supply



## ► Horizontal Openwell Submersible Pumps – confirming to IS 14220 : 1994

### Specifications :

Power Range	0.5 – 5.0 HP in 1 Phase 0.5 – 20 HP – 3 Phase
Speed	2880 rpm
Version	200 - 240 V, 350-440V, A.C., 50 Hz
Discharge Range	115 – 810 lpm in 1 phase 115 – 2190 lpm in 3 Phase
Head Range	6 – 48 mtr in 1 Phase 6 – 82 mtr in 3 Phase
Suction x Delivery size	25x25 to 80x80 mm in 1 Phase 25x25 to 100x100 mm 3 phase
Duty	S1 (Continuous)

### MOC :

Rear Cover / Bracket	Cast Iron
Stator Shell	Cast Iron / S.S / M.S
Shaft	SS 410
Impeller	Nylon / Noryl
Pump casting	Cast Iron
Seal	NBR
Thrust Bearing Set	Leaded Bronze and Composites / SS V/s Carbon / SS V/s Fiber
Diaphragm	NBR
Journal bearings	LTB 4

### Application in :

- Lift from rivers and canals for irrigation
- Domestic water supply to multistory
- Swimming pool & fountains
- Water supply in commercial establishments
- For ETP, STP & WTP purpose



## CI Sewage Pumps

### Specifications :

Power Range	1.0, 2.0 & 3.0 HP in 1 Phase & 3 Phase
Speed	2880 rpm
Version	220-240V, 50 Hz, A.C.-1 Phase, 350-440V – 3 Phase
Discharge Range	10 - 600 lpm
Head Range	3 - 30 mtr
Outlet Size	50 & 75 mm
Duty	S1 (Continuous)
Protection	IP 68
Cable	VCT Epoxy resin seal cable.
Thermal Protector	Automatic reset motor protector
Insulation	Class B

### MOC :

Impeller Type	P type Semi Open
Casing Cover	Cast Iron
Bearing	Ball type bearing
Impeller	Cast Iron
Casing	Cast Iron
Upper Cover	Cast Iron
Motor side Mechanical Seal	Carbon v/s Ceramic
Pump side Mechanical Seal	SiC V/s SiC
Motor Body	Stainless Steel
Shaft	SS-410

### Application in :

- Drainage of sewage from the building basements & hotel industry
- Drainage of sewage from industrial process factories
- To empty the septic tanks
- To clear water logging
- To flush out waste water



## Stainless Steel Sewage Pumps

### Specifications :

Power Range	0.5 & 1 HP
Outlet size	32 & 42 mm
Version	220-240V, 50 Hz, A.C.-1 Phase,
Speed	2880 rpm
Discharge range	43 – 92 lpm
Head Range	3 – 8 mtr
Max. dia of soft soluble	5 mm in 0.5 HP 30 mm in 1 HP
Insulation	Class B
Degree of protection	IP 68

### MOC :

Pump Casing	Stainless Steel
Pump Body	Stainless Steel
Impeller	Cast Iron / Noryl
Shaft	SS-410
Double Sealing	NBR & Mechanical Seal Carbon V/s Ceramic
Bracket / Front end Shield	Cast Iron
Rear end shield	Cast Iron
Stator Body	Stainless Steel

### Application in :

- Drainage of sewage from the basements
- To clear man hole sewages
- To clear waste water from factories & hotel industry & institutes
- Clearing industrial process waste
- To empty the septic tanks



## Mud Pumps

### Specifications :

Power Range	1.0, 2.0 & 3.0 HP
Version	220-240V, 50 Hz, A.C.-1 Phase, 350-440V – 3 Phase, DOL
Speed	2880 rpm
Discharge Range	55 – 245 lpm
Head Range	12 – 16 mtr
Degree of protection	IP 44
Insulation	Class B
Outlet size	40x40, 50x40 & 50x50 mm
Thermal Protection	Optional in Single Phase

### MOC :

Pump Casing	Cast Iron
Motor Body	Cast Iron
Stator body	Cast Iron
Impeller	Cast Iron
Shaft	EN 8
Pump Seal	Mechanical Seal (Carbon & Ceramics)
Bearing	Anti frictional deep groove ball bearing

### Application in :

- To pump out the mud slurry
- Drain out polluted water & Storm water
- Clearing industrial water & Sewage
- Water from marine (docks, ports and vessels)
- Clearing of muddy foundation, trenches and Pits





## ► V3 Borewell Submersible Pumps (Oil Filled/Water Filled) 80mm

### Specifications :

Power Range	0.5 HP - 1.5 HP
Version	220-240V, 50 Hz, A.C.
Method of starting	Capacitor start and capacitor run (CSCR) in water filled Capacitor start and run (CSR) in oil filled
Speed	2880 rpm.
Discharge Range	25 – 80 lpm
Head Range	12 – 83 mtr
Outlet size	25 & 32 mm
Degree of Protection	IP 68
Maximum Outer diameter	76 mm.
Duty	S1 (Continuous)
Mounting Standard	NEMA / Key way

### MOC Pump :

NRV Housing	Cast Iron (Regular) Stainless Steel (Platinum)
Impeller	Noryl*
Diffuser	Noryl*
Pump Jacket	Stainless Steel
Pump Shaft	SS 410
Suction inter Connector	Cast Iron (Regular) Stainless Steel (Platinum)
Coupling	SS 410

### MOC Motor :

Upper - Lower Housing & Motor Base	Cast Iron (Regular) / Stainless Steel Jacket (Platinum)
Stator Body	Stainless Steel
Shaft	SS 410
Bearing	Leaded Bronze in water filled Anti frictional deep groove ball bearing in oil filled
Thrust Bearing Set	Carbon V/s SS in water filled

### Application in :

- Bore well domestic water supply
- Rural and municipal water supply
- Irrigation
- Water supply in commercial establishments
- Small farms, gardening & nurseries



Regular

Platinum

## ► V4 Borewell Submersible Pumps (Oil Filled/Water Filled) 100mm – Confirming to IS 8034 : 2002

### Specifications :

Power Range	0.5 - 5.0 HP in 1 Phase 0.5 – 7.5 HP in 3 Phase
Version	220-240V, 50 Hz, A.C.- 1 Phase 350-440V – 3 phase
Method of starting	Capacitor start and capacitor run (CSCR) in oil filled Capacitor start and run (CSR) in oil filled 3 Phase – DOL / Star Delta
Speed	2880 rpm.
Discharge Range	15 – 355 lpm in water filled 15 – 475 lpm in oil filled
Head Range	10 – 300 mtr
Outlet size	32, 40, 50 & 65 mm
Degree of Protection	IP 68
Maximum Outer diameter	98 mm
Duty	S1 (Continuous)
Mounting	NEMA / Key way

### MOC Pump :

NRV Housing	Cast Iron (Regular) Stainless Steel (Platinum)
Impeller	Noryl* / Nylon
Diffuser	Noryl* / Cast Iron
Pump Shaft	SS 410
Suction inter Connector	Cast Iron (Regular) Stainless Steel (Platinum)
Coupling	SS 410
Pump Casing	Stainless Steel

### MOC Motor :

Upper, Lower Housing & Motor Base	Cast Iron (Regular) / Stainless Steel Jacket (Platinum)
Stator Body	Stainless Steel
Shaft	SS 410
Bearing	Leaded Bronze in water filled Anti frictional deep groove ball bearing in oil filled
Thrust Bearing Set	Carbon V/s SS in water filled

### Application in :

- Water supply from bore well
- Domestic & rural water supply
- Municipal & Irrigation purpose
- Water supply in commercial establishments
- Small farms, gardening & nurseries



Regular

Salsa &amp; Galaxy

## ► V5 to V10 Borewell Submersible Pumps - confirming to IS 8034 : 2002

Specifications :	V5	V6	V7	V8	V10
Power Range	3 – 7.5 HP in 1 Phase 3 – 12.5 HP in 3 Phase	1.5 – 7.5 HP in 1 Phase 3 – 35 HP in 3 Phase	5 – 35 HP in 3 Phase	6 – 125 HP in 3 Phase	20 – 150 HP in 3 Phase
Version	220-240V, 50 Hz, A.C.- 1 Phase 350-440V – 3 phase	220-240V, 50 Hz, A.C – 1 Phase	350-440V, A.C., 50Hz – 3 Phase	350-440V, A.C., 50Hz – 3 Phase	350-440V, A.C., 50Hz – 3 Phase
Method of starting	Capacitor start and capacitor run (CSCR) in 1 Phase DOL / Star in 3 Phase	Capacitor start and capacitor run (CSCR) in 1 Phase DOL / Star in 3 Phase	DOL / Star Delta	DOL / Star Delta	DOL / Star Delta / ATS
Speed	2880 rpm.	2880 rpm	2880 rpm	2880 rpm	2880 rpm
Discharge Range	350 – 700 lpm	80 – 1150 lpm	660 – 1680 lpm	440 – 1970 lpm	960 – 4350 lpm
Head Range	13 – 109 mtr	12 – 435 mtr	15 – 100 mtr	17 – 280 mtr	19 – 368 mtr
Outlet size	50 & 75 mm	50, 65 & 75 mm	100 mm	75, 100 & 125mm	125 & 150 mm
Degree of Protection	IP 68	IP 68	IP 68	IP 68	IP 68
Max Outer Diameter	121 mm	142 mm	159 mm	185 mm	225 mm
Duty	S1 (Continuous)	S1 (Continuous)	S1 (Continuous)	S1 (Continuous)	S1 (Continuous)

### MOC Pump :

NRV Housing	Cast Iron
Impeller	Stainless Steel
Diffuser	Cast Iron
Pump Shaft	SS 410
Suction inter Connector	Cast Iron
Coupling	SS 410

### MOC Motor :

Upper & Lower Housing	Cast Iron
Stator Body	Stainless Steel
Shaft	SS 410
Bearing	Leaded Bronze
Thrust Bearing Set	Carbon V/s SS

### Application in :

- Water extraction from boreholes
- large irrigation
- Agriculture & institutes water supply
- Civil & industrial water supply
- Rural water supply



## ► Solar Submersible Pumps OSP-2, 3, 5, 8 & 14 Series



### Specifications :

Power Range	1 – 10 HP
Standard as per	NEMA
Version	230 V & 415 V in 3 Phase, A.C, 50 Hz, DOL / Star
Speed	2880 rpm
Discharge range	15300 – 810000 LPD
Head Range	7 – 100 mtr
Outlet size	40, 50, 65, 75, 100 & 125 mm
Degree of Protection	IP 68
Max. OD Range	97.5 – 225 mm
Duty	S1
Input Watt Range	1200 – 9000 Wp

### MOC Pump :

Discharge Chamber	Stainless Steel
Valve Sheet	NBR + Stainless Steel
Impeller	Stainless Steel
Diffuser	Stainless Steel
Pump Shaft	Stainless Steel
Suction inter Connector	Stainless Steel
Coupling	Stainless Steel
Pump Casing	Stainless Steel

### MOC Motor :

Upper, Lower Housing & Motor Base	Stainless Steel / Cast Iron
Stator Shell	Stainless Steel
Shaft	Stainless Steel
Journal Bush	Carbon Bush / GM bush
Thrust Bearing Set	SS 420 and Graphite Carbon

### Application in :

- Rural water supply from bore well
- Domestic & agriculture supply
- Farms & irrigation
- Civil & industrial
- Water supply systems of government





## ► Stainless Steel V4 Borwell Submersible Pumps (Oil Filled/Water Filled) - Confirming to IS 8034 : 2002 OSP-2, 3, 5, 8 & 14 Series

### Specifications :

Power Range	0.5 HP – 5.0 HP in 1 Phase 0.5 HP – 10 HP in 3 Phase
Version	220-240V, 50 Hz, A.C.-1 Phase, 350-440V – 3 Phase
Speed	2880 rpm.
Discharge Range	23 – 250 in 1 Phase 23 – 250 in 3 Phase
Head Range	42 – 200 mtr in 1 Phase 42 – 350 mtr in 3 Phase
Outlet size	25, 32, 40 & 50 mm
Degree of Protection	IP 68
Maximum Outer diameter	98 mm
Duty	S1 (Continuous)
Method of starting	Capacitor start and Capacitor run (CSCR) in water filled Capacitor start and run (CSR) in oil filled In 1 Phase / DOL in 3 Phase
Mounting Standard	As per NEMA

### MOC Pump :

NRV Housing	Stainless Steel
Check Valve	Stainless Steel
Check Valve Sheet	NBR
Impeller	Stainless Steel
Bowl	Stainless Steel
Pump Shaft	SS-431
Suction inter Connector	Stainless Steel
Coupling	SS 410

### MOC Motor :

Upper, Lower Housing & Motor Base	Cast Iron / Stainless Steel
Stator Shell	Cast iron
Shaft	Stainless Steel
Bearing	Leaded Bronze in water filled Anti frictional deep groove ball bearing in oil filled
Thrust Set	Carbon V/s SS in water filled

### Application in :

- Water supply from bore well
- AC and solar energy compatible
- Municipal & irrigation purpose
- Water supply in commercial establishments
- Small farms, gardening & nurseries



## ► Horizontal Multistage Centrifugal Pumps OCH-1, 2, 3 & 5 Series

### Specifications :

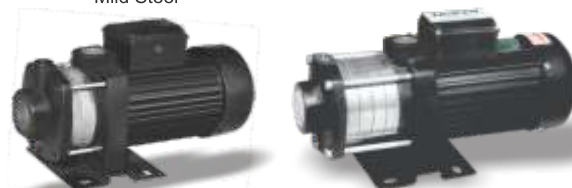
Power Range	0.5 HP – 2 HP in 1
Version	200 - 240 V in 1 Phase
Discharge Range	13 – 117 lpm
Head Range	20 – 41 mtr
Outlet size	25x25 mm
Water temperature	90° C
Speed	2880 rpm
Ambient temperature	55°C
Insulation	Class B
Degree of protection	IP 54
Main Dimensions (mounting)	Foot Mount - 96 X 115 mm Suitable for 8 mm/10 mm Bolt

### MOC :

Pump Casing	Cast Iron
Pump Bracket	Cast Iron
Impeller	Stainless Steel
Diffuser	Stainless Steel
Motor Body	Aluminum
Shaft	SS-410
Mechanical Seal	Carbon V/s Ceramic
Base Plate	Mild Steel

### Application in :

- Pressure boosting in commercial R.O & others
- Water circulation in DM Plant
- Pumping of clean liquids in industry
- Water boosting in commercial establishments
- Car washing, small farms & multi-story buildings



## ► Stainless Steel Shallow Well Pumps

### Specifications :

Power Range	0.5, 1.0 & 1.5 HP
Version	220-240V, 50 Hz, A.C.-1 Phase, Permanent Split capacitor (PSC) Incorporated with Thermal Overload Protector.
Speed	2880 rpm.
Duty	S1 (Continuous)
Degree of Protection	IP 54
Insulation	Class B
Discharge range	51-11 lpm
Head range	10 – 40 mtr
Suction lift up to	8 mtr
Suction x Delivery size	25x25 mm

### MOC :

Pump Casing	Stainless Steel
Motor Frame	Aluminum
Impeller	Stainless Steel
Diffuser	Noryl
Shaft	SS 410
Sealing	Mechanical Seal (Carbon V/s Ceramic)

### Application in :

- Water supply in gardens & landscapes
- Pressure boosting in residential areas
- Drinking water supply in industries
- Industrial liquids supplies
- Water supply in Nurseries



## ► Stainless Steel V5 to V12 Borewell Submersible Pumps - Confirming to IS 8034 : 2002



Specifications :	V5	V6	V7	V8	V9	V10	V12
Series :	OSP 9, 12, 17, 29, 30 & 31	OSP 9, 12, 17, 30, 40, 46 & 60 OHF 65, 90, 110, 135 & 160 ORF 55, 65, 90 & 110	OSP 70 & 90	OSP 77 & 95	OSP 120	OSP 125 & 160	OSP 215
Power Range	1.5 – 5.0 HP in 1 Phase 1.5 – 10 HP in 3 phase	3 – 7.5 HP in 1 Phase 3 – 50 HP in 3 phase	3.0 – 50 HP in 3 phase	5.0 – 75 HP in 3 phase	6 – 75 HP in 3 phase	7.5 – 75 HP in 3 phase	10 – 75 HP in 3 phase
Version	220-240V, A.C, 50 Hz, - 1 Phase 350-440V – 3 phase	220-240V, A.C, 50 Hz, - 1 Phase 350-440V – 3 phase	350-440V – A.C, 50 Hz – 3 Phase	350-440V – A.C, 50 Hz – 3 Phase	350-440V – A.C, 50 Hz – 3 Phase	350-440V – A.C, 50 Hz – 3 Phase	350-440V – A.C, 50 Hz – 3 Phase
Method of starting	A.C.- Capacitor start and Capacitor run (CSCR) in 1 Phase, DOL/Star Delta in 3 Phase	A.C.- Capacitor start and Capacitor run (CSCR) in 1 Phase, DOL/Star Delta in 3 Phase	DOL/Star Delta in 3 Phase	DOL/Star Delta in 3 Phase	DOL/Star Delta in 3 Phase	DOL/Star Delta in 3 Phase	DOL/Star Delta/ ATS in 3 Phase
Speed	2880 rpm	2880 rpm	2880 rpm	2880 rpm	2880 rpm	2880 rpm	2880 rpm
Discharge Range lpm	150-500	150-1000	1100-1400	1200-1600	1600-2000	2000-2700	2700-3600
Head Range in meters	10-130	15-400	10-110	10-160	16-70	13-180	13-120
Outlet size	50, 65, 75 & 100 mm	50, 65, 75 & 100 mm	100 mm	100 mm	100 mm	125 mm	150 mm
Degree of Protection	IP 68	IP 68	IP 68	IP 68	IP 68	IP 68	IP68
Max outer diameter	126 mm	147 mm	157 mm	170 mm	190 mm	220 mm	250 mm
Duty	S1	S1	S1	S1	S1	S1	S1
Standard as per	NEMA	NEMA	NEMA	NEMA	NEMA	NEMA	NEMA

### MOC :

NRV Housing	Stainless Steel
Valve Sheet	NBR + SS-304
Impeller	Stainless Steel
Diffuser	Stainless Steel
Pump Shaft	Stainless Steel
Suction inter Connector	Stainless Steel
Coupling	Stainless Steel

Note : Also available in 60 Hz.

### Application in :

- Water extraction from boreholes for large irrigation
- AC and solar energy compatible
- Agriculture & institutes water supply
- Civil & industrial water supply
- Rural water supply



## ► Submersible Motor



Series -	4" OSL-100	4" OSF-100	6" OSL-150	6" OSF-150
Power Range	0.5 – 1.5 HP in 1 & 3 Phase	2 – 5 HP in 1 Phase 2 – 7.5 HP in 3 Phase	3 – 7.5 HP in 1 Phase 3 – 15 HP in 3 Phase	5.5 – 50 HP in 3 Phase
Version (A.C)	380-415V, 3 Phase 50 Hz 220-240V, 1 Phase 50 Hz	380-415V, 3 Phase, 50 Hz 220-240V, 1 Phase, 50 Hz 380/460V, 3 Phase, 60 Hz	380-415V, 3 Phase 50 Hz 220-240V, 1 Phase 50 Hz	380-415V, 3 Phase, 50 Hz 380/460V, 3 Phase, 60 Hz
Speed (rpm)	2850-2880 at 50 Hz	2850-2880 at 50 Hz 3450 at 60 Hz	2850-2880 at 50 Hz	2850-2880 at 50 Hz 3450 at 60 Hz

### MOC Motor :

Upper, Lower Housing & Motor Base	Cast Iron/ Stainless Steel
Stator Shell	Stainless Steel
Shaft	Stainless Steel

Bearing	Leaded Bronze in water filled Anti frictional deep groove ball bearing in oil filled
Thrust Set	Carbon V/s SS in water filled



## ► Vertical Multistage Centrifugal Pumps OCR-1, 2, 3, 5 & 10 Series

### Specifications :

Power Range	1 – 3 HP in 1 Phase 1 – 20 HP in 3 Phase
Version	220 – 240 V in 1 Phase 380 – 415 V in 3 Phase 50 Hz, AC
Speed	2880 rpm
Discharge Range	1.0 – 11 M <sup>3</sup> /H
Bar pressure range	0.6 – 22 Kg/cm <sup>2</sup>
Electric motor insulation	Class F
Degree of Protection	IP 54
Temperature range	-30° to 120° C

### MOC :

Pump Head	CI-FG-260 / Stainless Steel
Base	CI-FG-260 / Stainless Steel
Shaft	SS – 431 / Stainless Steel
Impeller	Stainless Steel
Bowl	Stainless Steel
Outer Sleeve	Stainless Steel
O-ring for outer sleeve	EPDM
Necking	PTFE
Shaft Seal	Cartridge Type TC V/s Carbon
Bearing Rings	Tungsten Carbide

### Application in :

- Commercial reverse osmosis system & de-mineralizing systems
- Boiler feed and water circulation
- Pressure boosting in mains in high-rise buildings & hotels
- Distribution from waterworks to ultra filtration and transfer back
- Constant pressure boosting system in washing, cleaning & fire fighting systems



## ► Pressure Boosting Unit OCHP Series

### Specifications :

Power Range	0.5 HP – 1.5 HP in 1 Phase
Version	200 -240 V in 1 Phase
Discharge Range	13 – 117 lpm
Head Range	20 – 41 mtr
Outlet sizes	25x25 mm
Water temperature	50° C
Speed	2880 rpm
Ambient temperature / temperature rise	55°C
Insulation	Class B
Degree of protection	IP 54
Main Dimensions (mounting)	Foot Mount - 96 X 115 mm Suitable for 8 mm/10 mm Bolt
Tank Capacity	8,19, 24, 36, 60 & 100 lts
Suitable Outlets	2,3,5,7 & 10 taps

### MOC :

Delivery × Suction Head	Cast Iron
Motor Body	Aluminum
Impeller	Stainless Steel
Diffuser	Stainless Steel
Motor Body	Aluminum
Shaft	SS-410
Mechanical Seal	Carbon V/s Ceramic
Base Plate	Mild Steel

### Application in :

- Water pressure for residential & commercial establishments.
- Water distribution in industries & small farms
- Hotels & multi-story buildings
- Apartments and bungalows
- Commercial washing purpose



## ► Stainless Steel Centrifugal Monoblock Pumps 2880 RPM *Confirming to IS 9079 : 2002* ONB Series

### Specifications :

Power Range	1.5 – 5 HP in 1 Phase 1.5 – 20 HP in 3 Phase
Speed	2880 rpm
Discharge range	65 - 1350 lpm in 1 Phase 65 – 2290 lpm in 3 Phase
Head range	10 – 30 mtr in 1 Phase 10 – 74 mtr in 3 Phase
Suction lift up to	8 mtr.
Suction x Delivery size	25x25 to 100x100 mm
Version	220-240V, 50 Hz, A.C.-1 Phase, Permanent Split capacitor (PSC) Incorporated with Thermal Overload Protector, 350-440V – 3 Phase
Degree of Protection	IP 54
Insulation	Class B
Duty	S1 (Continuous)

### MOC :

Pump Casing	Stainless Steel
Motor Body	Stainless Steel
Impeller	Stainless Steel
Shaft	EN 8
Sealing	Mechanical Seal (Carbon & Ceramic) or Asbestos Gland Rope Packing

### Application in :

- Sprinklers, drip irrigation & flooding
- In farms & gardens
- Industrial, fountains & pools
- High-rise buildings for water circulation
- Fire fighting set up



## ► Squirrel Cage Induction Motors (Single Phase) *Confirming to IS 996 : 2009*

### Specifications :

Power range	0.25 – 5 HP
Version	200 - 240 V, A.C, 50 Hz
Speed (Pole)	2 & 4
Enclosures	Totally Enclosed Fan Cooled
Frame Size	80 to 130M
Ambient temperature	50° C
Insulation	Class B
Combined Variation	10 % (absolute sum)
Duty	S1
Degree of protection	IP 44
Bearing	Anti frictional deep groove ball bearing
Grease	High temperature lithium complex grease (155° C)
Mounting Dimensions	B3 & B14

### Application in :

- Single phase machines & agriculture application
- Chaff cutter
- Wood planner
- Drilling machines & conveyers
- Special purpose applications



## ► Squirrel Cage Induction Motors – Three Phase

### Specifications :

Power range	0.25 – 120 HP
Version	380-415 V, A.C, 50 Hz
Speed (Pole)	2, 4, 6, 8 & 10 Pole
Enclosures	Totally Enclosed Fan Cooled
Frame Size	56 to 280M
Ambient temperature	50° C
Insulation	Class F
Combined Variation	10 % (absolute sum)
Connection	Star up to 2 HP / Delta above 2 HP
Duty	S1
Degree of protection	IP-55
Bearing	Anti frictional deep groove ball bearing
Grease	High temperature lithium complex grease (155° C)
Mounting Dimensions	Foot mounted according to IS 1231 (B3) Flange mounted according to IS 2223 (B5) Foot cum Flange mounted (B35) Face Mounted (B14)

### Application in :

- Industrial application
- Heavy & precision machinery
- Air conditioning, blowers & cooling towers
- Turning, milling, drilling, cutting, slitting and grinding machinery
- Special electrical applications



## ► Submersible Three Core Flat Cables – *Confirming to IS 694 : 2010*

### Specifications :

No. of core	3
Size	1, 1.5, 2.5, 4, 6, 10, 16 & 25 sq.mm
Length available	250, 500 & 1000 mtr
Working voltage	Up to & including – 450/750 Volts
Type	PVC insulated & PVC Sheathed
Wire	Copper wire multi stand twisted

### Application in :

- Specially designed for bore well submersible pumps



## ► Winding Wire

### Specifications :

Size	0.40 – 2.20 mm
Type	BOPP / Polyester Wrapped Copper Conductor

### Application in :

- Borewell submersible pumps

### Features :

- Resistance to abrasion
- Low power consumption
- Tear resistance
- Outstanding electrical, mechanical properties



## ► Electrical Control Panel

### Specifications :

Version	200 - 240 V- 1 Phase , A.C, 50 Hz
HP Compatibility	0.5 – 7.5 HP
Body	Powder Coated MS Sheet
Features	Relay or Contactor (as per requirement)

### Application in :

- Submersible pumps
- Openwell pumps
- External electrical supply



*Note : Due to R&D the specifications & picture may vary from time to time.*



## ► Solar Submersible Pumps

Specially Designed High Discharge Series  
of Borewell Submersible Pump Sets  
as per MNRE guidelines

Series available in AC & DC Motors  
In Water & Oil Filled

Model	HP	Head (m)	Discharge (lpm)
OSSL-1800-30-32	2	30	170
OSSL-3000-50-19	3	50	170
<b>OSSL-3000-70-13</b>	3	70	135
OSSL-4800-50-19	5	50	260
OSSL-4800-70-13	5	70	195
<b>OSSL-4800-100-8.5</b>	5	100	155

Other Range is also available





## ► Dealers Meet / Exhibition Participation / Seminars ◀





## ► Certifications ◀

- **STAR EXPORT HOUSE**  
(Recognised by Govt. of India)
- **ISO 9001:2015 CERTIFICATION**
- **ISI MARKED PRODUCTS**
- **BEE 5 STAR RATED PRODUCTS**



ISO 9001:2015 CERTIFICATION

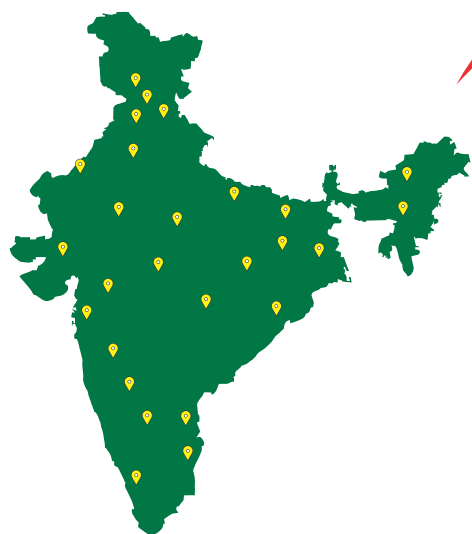


Products





PAN INDIA PRESENCE



GLOBAL PRESENCE



# Oswal Pumps Ltd.

Oswal Estate, NH-1, Kutail Road, P.O Kutail - 132 037, Distt. KARNAL (Haryana) INDIA

Phone : +91-1748-257700-07

e-mail : [sales@oswalpumps.com](mailto:sales@oswalpumps.com) | website : [www.oswalpumps.com](http://www.oswalpumps.com)